



Manhole Components



<u>Code</u>	<u>Description</u>	<u>A</u>	<u>Length</u>
-------------	--------------------	----------	---------------

CP2100	MANHOLE	650mm x 300mm	
CP2105	MANHOLE	650mm x 150mm	
CP2110	MANHOLE	650mm x 450mm	

CP2203	MANHOLE	900mm x 300mm	
CP2206	MANHOLE	900mm x 600mm	
CP2209	MANHOLE	900mm x 900mm	

CP2292	MANHOLE	1050mm x 100mm	
CP2293	MANHOLE	1050mm x 150mm	
CP2294	MANHOLE	1050mm x 200mm	
CP2297	MANHOLE	1050mm Sloping	
CP2300	MANHOLE	1050mm x 300mm	
CP2306	MANHOLE	1050mm x 600mm	
CP2309	MANHOLE	1050mm x 900mm	
CP2312	MANHOLE	1050mm x 1200mm	
CP2315	MANHOLE	1050mm x 1500mm	
CP2318	MANHOLE	1050mm x 1800mm	

CP2326	BASE UNIT	1050mm x 600mm	
CP2329	BASE UNIT	1050mm x 900mm	

CP2333	MANHOLE	1200mm x 300mm	
CP2336	MANHOLE	1200mm x 900mm	
CP2339	MANHOLE	1200mm x 1200mm	

ANCILLARY ITEMS

CP2350	MANHOLE BASE (Cast or component)		
CP2355	MANHOLE CONE	1050 x 670mm High	
CP2490	STEP IRON	375mm (300mm Centres)	

CP2552	Bostik tape	17mm x 3.6M	
CP2553	Bostik triangular tape	25mm x 3M	
CP2554	VOLCLAY waterstop	10M Roll	
CP2555	VOLCLAY waterstop	Box (45.72M)	
CP2556	VOLCLAY adhesive	1 Litre	
CP2560	GATIC grease	4KG	

Hudson Civil manhole components are available in varying diameters from 650mm to 1200mm. For larger diameters we offer a range of large shaft liners which are also available as pump stations.

Base units available in both 600mm and 900mm high. Preformed knockouts allow for quick pipe penetrations to be made on site. Step iron holes do not pass through the wall ensuring water tightness once installed. One piece construction eliminates leaks at the base / wall joint.

Hobart

10 Gepp Parade, Derwent Park, 7009
T (03)62730463 F (03)62733438
E hobart@hudsoncivil.com.au



Launceston

7 Donald's Avenue, Prospect Tas 7250
T (03)63358200 F (03)63401881
E sales@hudsoncivil.com.au



Manhole Surrounds

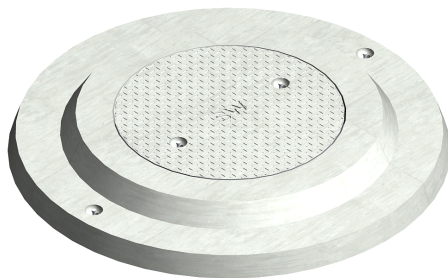


CP1150 SURROUND 750mm

CP1151 SURROUND 750mm H/D

1010mm Diameter, 600mm Clear opening, 150mm thick (H/D 250mm thick)

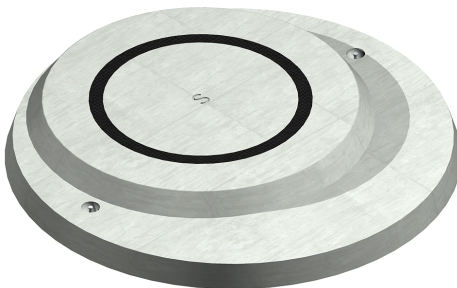
- Steel banded
- Class B cast iron
- Class D cast iron
- Class D cast iron grated



CP1160 SURROUND (Devonport) Central opening

1395mm Diameter, 600mm Clear opening, 150mm thick

- Steel banded
- Class B Cast Iron (no raised section in surround)

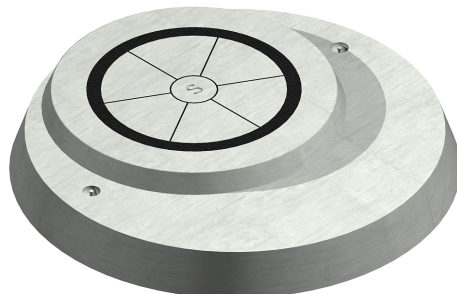


CP1165 SURROUND – Offset cast iron lid

CP1167 SURROUND – Offset steel banded lid

1390mm Diameter, 600mm Clear opening, 150mm thick

- Steel banded
- Class B cast iron
- Class B cast iron grated



CP1170 SURROUND Highway (trafficable)

1390mm Diameter, 600mm Clear opening, 235mm thick

- Class D cast iron
- Class D cast iron grated

Hobart

10 Gepp Parade, Derwent Park, 7009
T (03)62730463 F (03)62733438
E hobart@hudsoncivil.com.au



Launceston

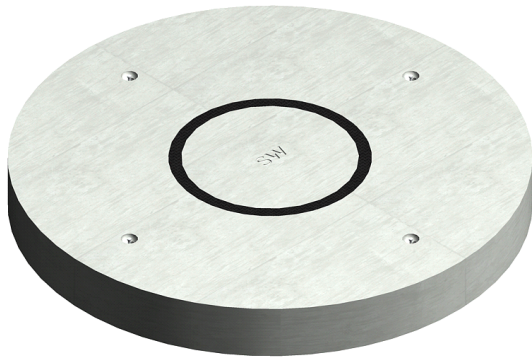
7 Donald's Avenue, Prospect Tas 7250
T (03)63358200 F (03)63401881
E sales@hudsoncivil.com.au



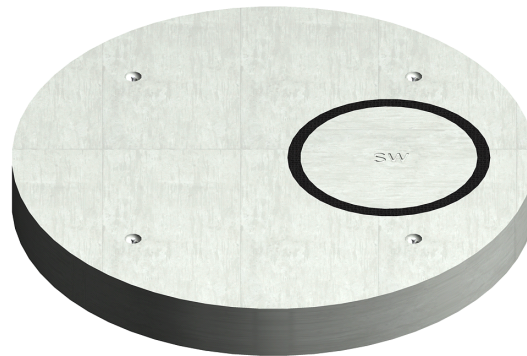
"New" 1500 Diameter Manhole Components

- Hudson Civil now manufactures 1500mm diameter manholes for light duty applications.
- Trafficable items also available upon request

Surrounds are 1800mm Diameter, 200mm thick.
With a 600 clear opening Class B Gatic Lid available central or offset.



Central Opening Surround



Offset Surround



Manholes are 1500mm internal diameter, 1665mm external diameter, 1200mm high.
Shorter manholes can be made to order upon request.

Hobart

10 Gepp Parade, Derwent Park, 7009
T (03)62730463 F (03)62733438
E hobart@hudsoncivil.com.au



Launceston

7 Donald's Avenue, Prospect Tas 7250
T (03)63358200 F (03)63401881
E sales@hudsoncivil.com.au