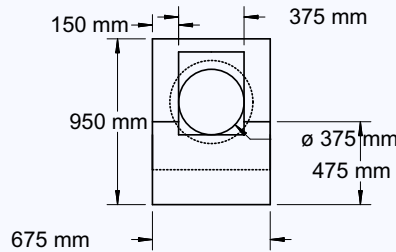
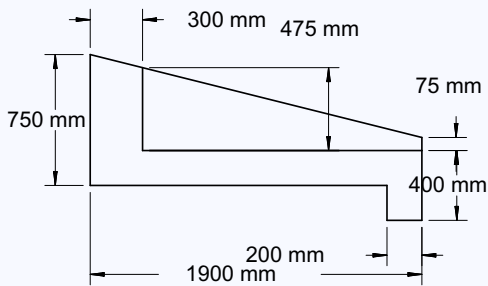
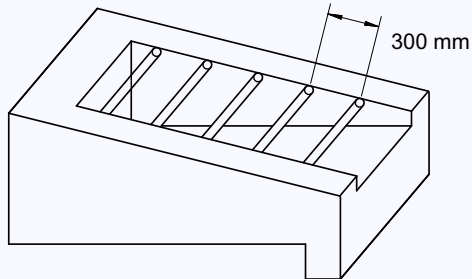


DIER HEADWALLS AND ENDWALLS

DIER Headwalls and Endwalls

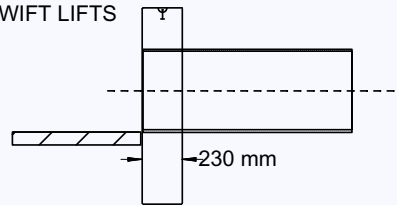
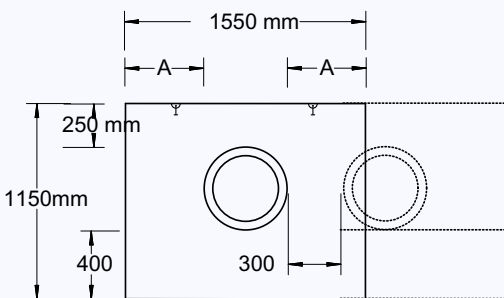


PRECAST DRIVEABLE CULVERT ENDWALL TYPE 1

D.O.T. REFERENCE 3402-2/P35

RAILS 50NB X 5.4mm WT, WELD TO 50 X 50 X 8 ANGLE IRON
REMOVEABLE SS FIXINGS TO BE USED

2 X 1.3 RATED SWIFT LIFTS
100 mm LONG

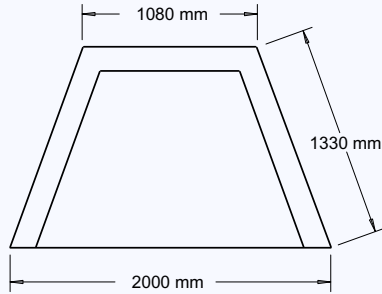


PIPE DIA (mm)	DIM 'A'
300	590
375	550
450	500

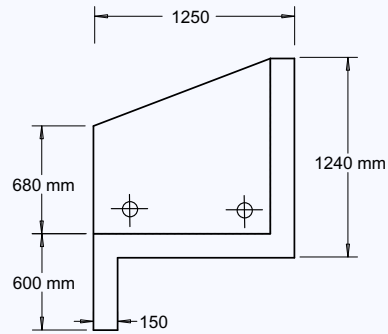
DIER ENDWALL P24-2

NOTE : MULTIPLE ENDWALL INCORPORATE RF 81

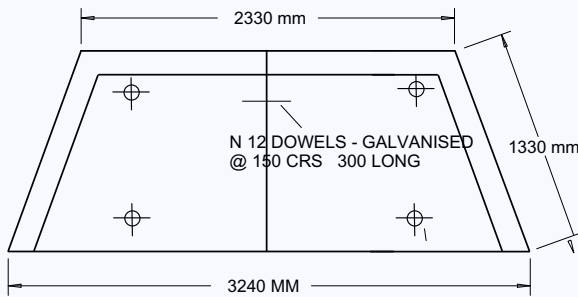
DIER HEADWALLS AND ENDWALLS



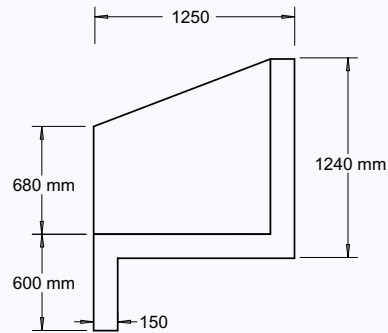
DIER STANDARD HEADWALL - P14-2
 UPTO 750 DIA
 OPTIONAL DISSIPATORS



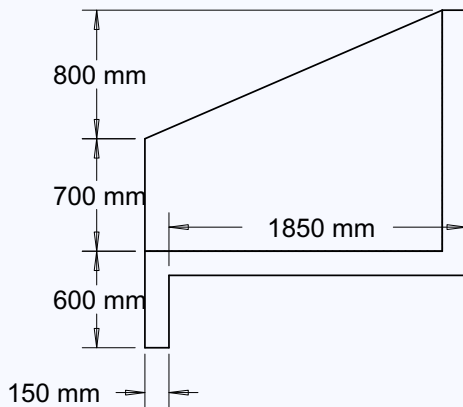
SWIFT LIFT PINS TO
INSIDE FACE OF WING



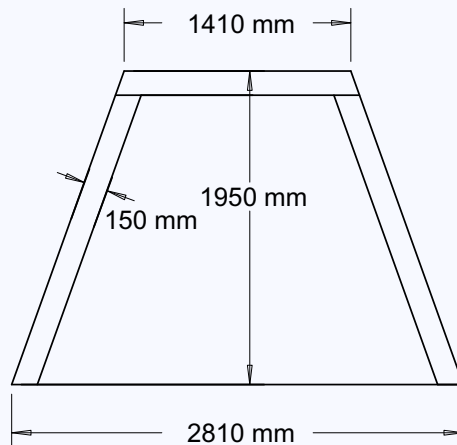
DIER STANDARD HEADWALL - P16-2
 UP TO 2 X 650 DIA
 OPTIONAL DISSIPATORS
 TWIN 900 DIA ALSO AVAILABLE



4 x 2.5 TONNE RATED SWIFT LIFT PINS
 100MM LONG TO FLOOR OF ENDWALL
 NOTE: GROUT UP VOID ON SITE

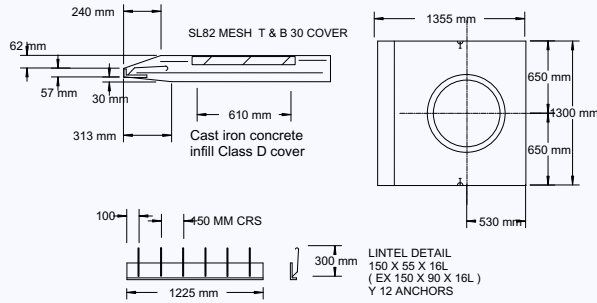


P14-2 PIPES FROM 750 mm UPTO 1200 mm DIA

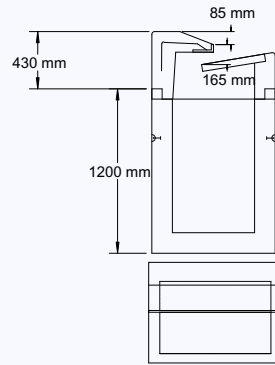


DIER STORMWATER PITS

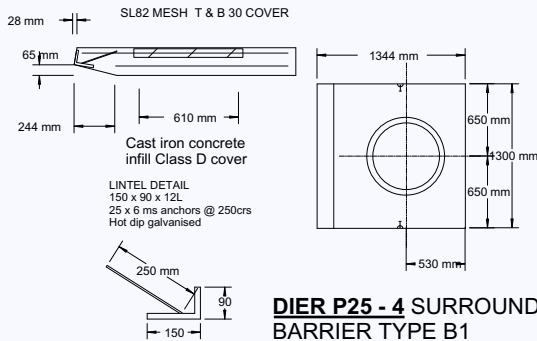
DIER Stormwater Pits



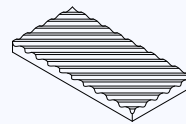
**DIER P24-4 SURROUND & LID
MOUNTABLE TYPE
SUITS 900 x 900 ID PIT**



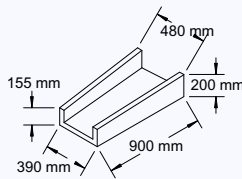
**DIER P26-2 PLAN VIEW
GRATED SIDE ENTRY ASSEMBLY**



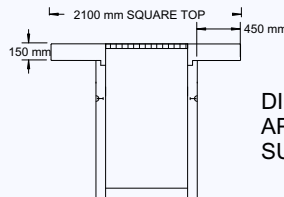
**DIER P25-4 SURROUND & LID
BARRIER TYPE B1
SUITS 900 x 900 ID PIT**



**DIER DEFLECTOR UNIT FOR USE
WITH SIDE ENTRY PIT SURROUNDS**

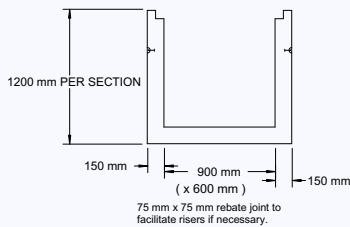


DIER BATTER CHANNEL

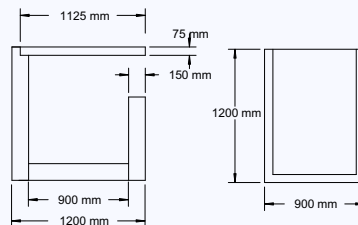
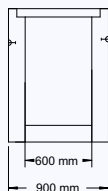


**DIER P20-2
APRON AND GRATE
SUITS 900 x 900 ID PIT**

**DIER STANDARD 900 mm x 900 mm PITS (ID)
150 TH
VERTICAL SIDES TO INCORPORATE RISERS.
POSITION OF REBATED JOINT FOR APRON MAY VARY.**



**DIER STANDARD 900 x 600 ID PIT
1200 SECTIONS, RISERS AVAILABLE**



**DIER P23 - 2
CATCH PIT
PRECAST PIT & LID**

Launceston Office:
7 Donalds Avenue
Prospect, Tasmania 7250
Phone: 03 63445570
Fax: 03 63401881

Hobart Office:
9 Lampton Avenue
Derwent Park Tasmania 7009
Phone: 03 62730463
Fax: 03 62733438

