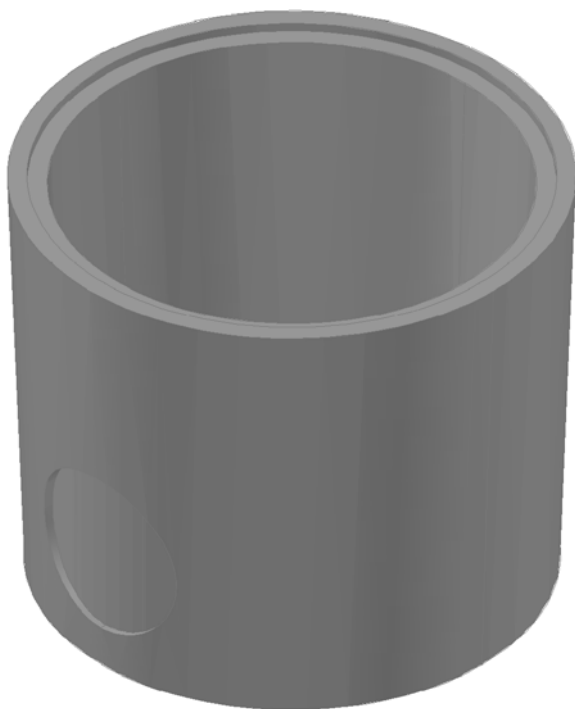
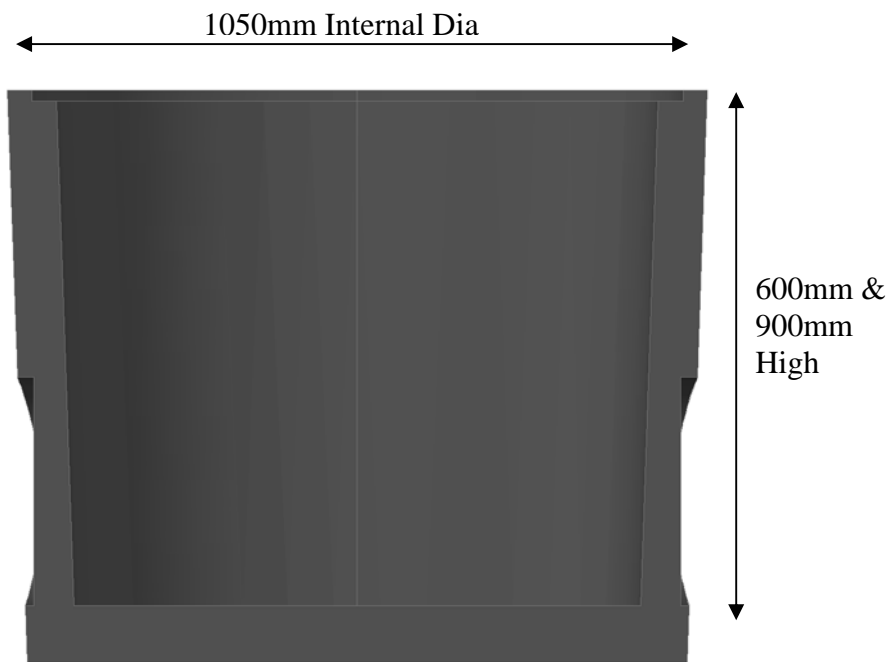


MANHOLE BASE UNIT



- Base units are available in both 600mm and 900mm heights
- Safely bench manholes from outside so as to avoid confined space issues
- Preformed knockouts to allow for quick pipe penetrations
- One piece construction ensures a water tight joint at the wall / base interface

Launceston Office:
7 Donalds Avenue
Prospect, Tasmania
7250
Phone: 03 63358200
Fax: 03 63401881

Hobart Office:
9 Lampton Avenue
Derwent Park Tasmania
7009
Phone: 03 62730463
Fax: 03 62733438



HUDSON
CIVIL PRODUCTS

MANHOLE BASE UNIT