

Hudson Environmental can supply precast tanks suitable for both stormwater reuse and sewage pump stations. We manufacture a large range of small tanks, shafts and pits along with large diameter tanks.

Precast Tank Range

Internal Diameter	Height (Length)*	Wall Thickness
1800	2400	100
2400	2400	125
3000	1500 + 3000	175
4000	2400	150
6500	1200	250

*Risers are available up to the heights shown above however, they will not have a rebate on the top section.



We also provide steel fabrication through our association with HB Engineering. We offer fabrication of stainless steel, aluminium, and mild steel.



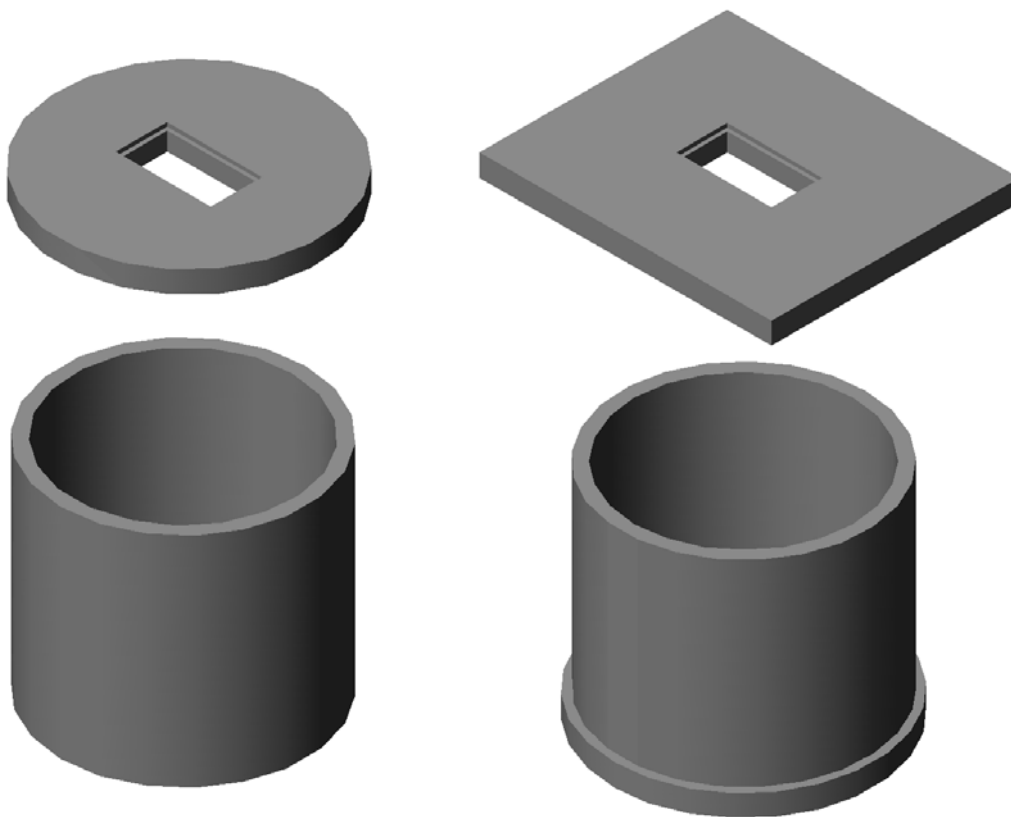
Our large range of precast shafts and pits also allows for valve pits to be quickly installed or to be pre-plumbed (above left) prior to delivery



Concrete tanks manufactured to your requirements.

The most cost effective design (below left) is a tank with a base cast internally with a close fitting round surround. This may require some additional insitu concrete buoyancy control and can cause a loss of capacity due to the base reducing the height of the tank.

Other options (below right) include an external base and rectangular surrounds. Hudson Environmental can manufacture any shape surround that may be required however thought to transportation should be kept in mind when designing surrounds for large diameter tanks. The extra cost of the external base may be beneficial when compared to on site buoyancy control measures. This external ‘flange’ may be manufactured to any width with thought once again given to transportation along with the additional weight of the tank when completed.



Class ‘2’ RCP is often incorrectly used to design pump wells. Class ‘2’ pipe is designed as a pipe, NOT as a pump well.

Our entire range has been designed for in-ground applications and is available for trafficked areas.

- Strong, smooth off-form finish
- 40mm cover to reinforcing
- No laitenance inside the well to remove prior to painting
- ‘Swift Lift’ lifting devices in all products
- Engineering certification available for all products

Pump well ancillary items product selector					
Product	Aluminium	Galvanised mild steel	FRP (Fibre Reinforced Plastic)	Fibreglass	Stainless Steel
Access covers	Yes	Yes	Yes	No	No
Safety grates	Yes	Yes	Yes	No	Yes
Ladder	No	Yes	No	Yes	Yes
Pipe brackets	No	Yes	No	No	Yes

