

## Manhole Surrounds

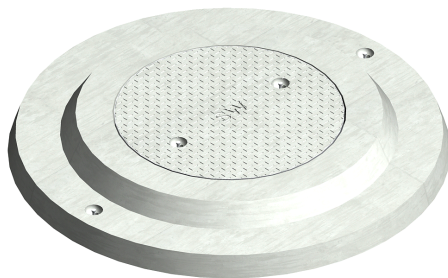


**CP1150 SURROUND 750mm**

**CP1151 SURROUND 750mm H/D**

1010mm Diameter, 600mm Clear opening, 150mm thick (H/D 250mm thick)

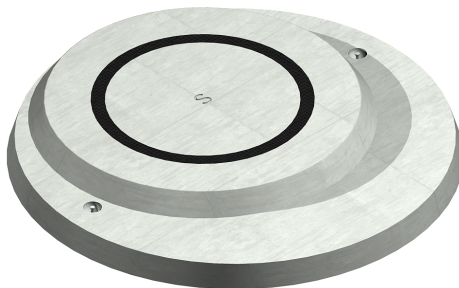
- Steel banded
- Class B cast iron
- Class D cast iron
- Class D cast iron grated



**CP1160 SURROUND (Devonport) Central opening**

1395mm Diameter, 600mm Clear opening, 150mm thick

- Steel banded
- Class B Cast Iron (no raised section in surround)

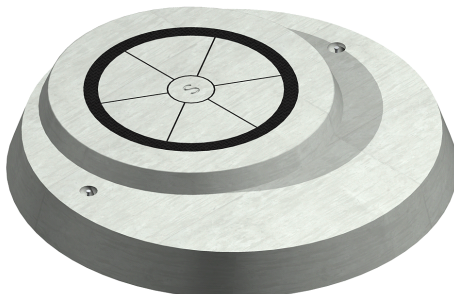


**CP1165 SURROUND - Offset cast iron lid**

**CP1167 SURROUND - Offset steel banded lid**

1390mm Diameter, 600mm Clear opening, 150mm thick

- Steel banded
- Class B cast iron
- Class B cast iron grated



**CP1170 SURROUND Highway (trafficable)**

1390mm Diameter, 600mm Clear opening, 235mm thick

- Class D cast iron
- Class D cast iron grated